



# Sandwell Health Profile Report

## Public Health England

**Alice Munro** SPR Public Health

**Valerie DeSouza** Public Health Consultant

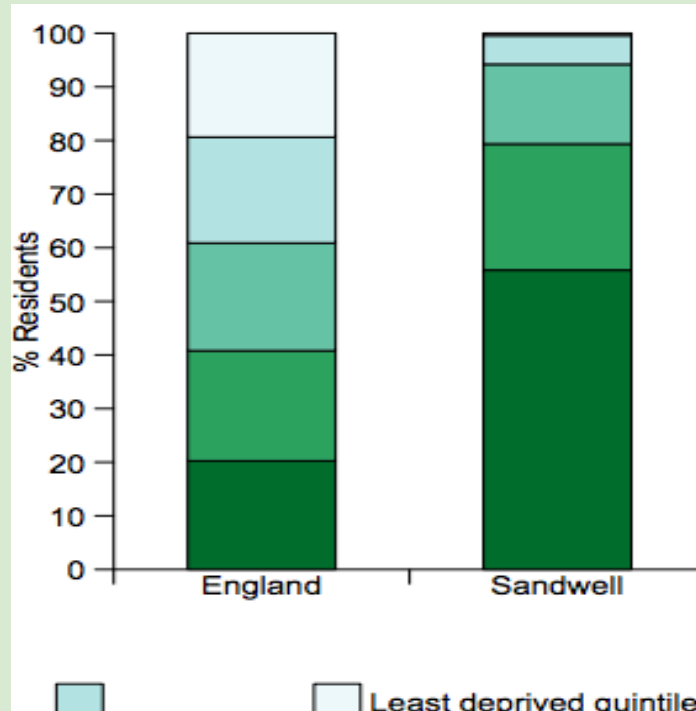
Presentation to Health and Adult Social Care Scrutiny Board

Sandwell Metropolitan Borough Council  
18 Sept 2017

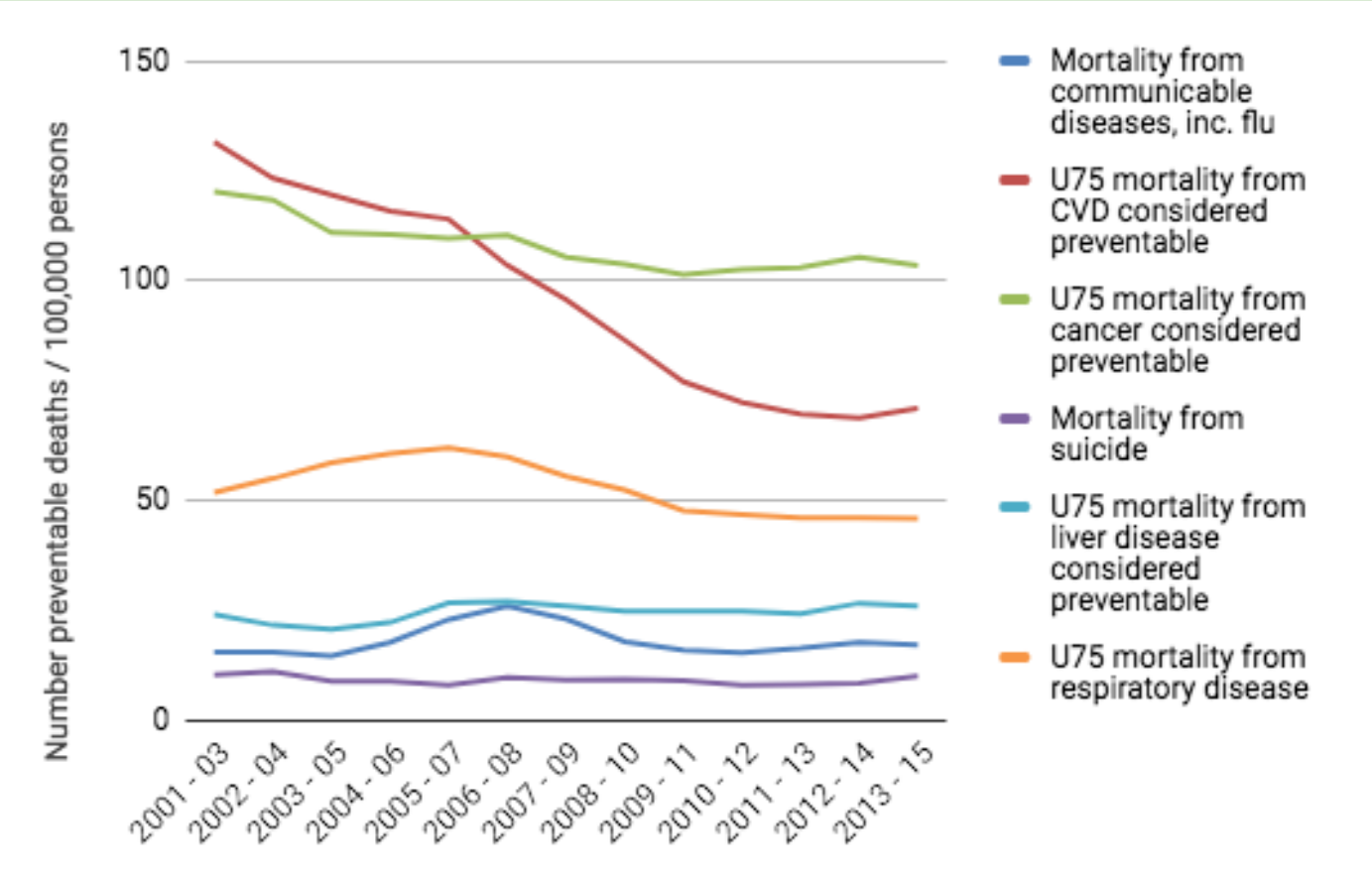
# Sandwell

- 319,000 people, growing population
- 10<sup>th</sup> lowest income local authority in England
- 30% of children live in low income families

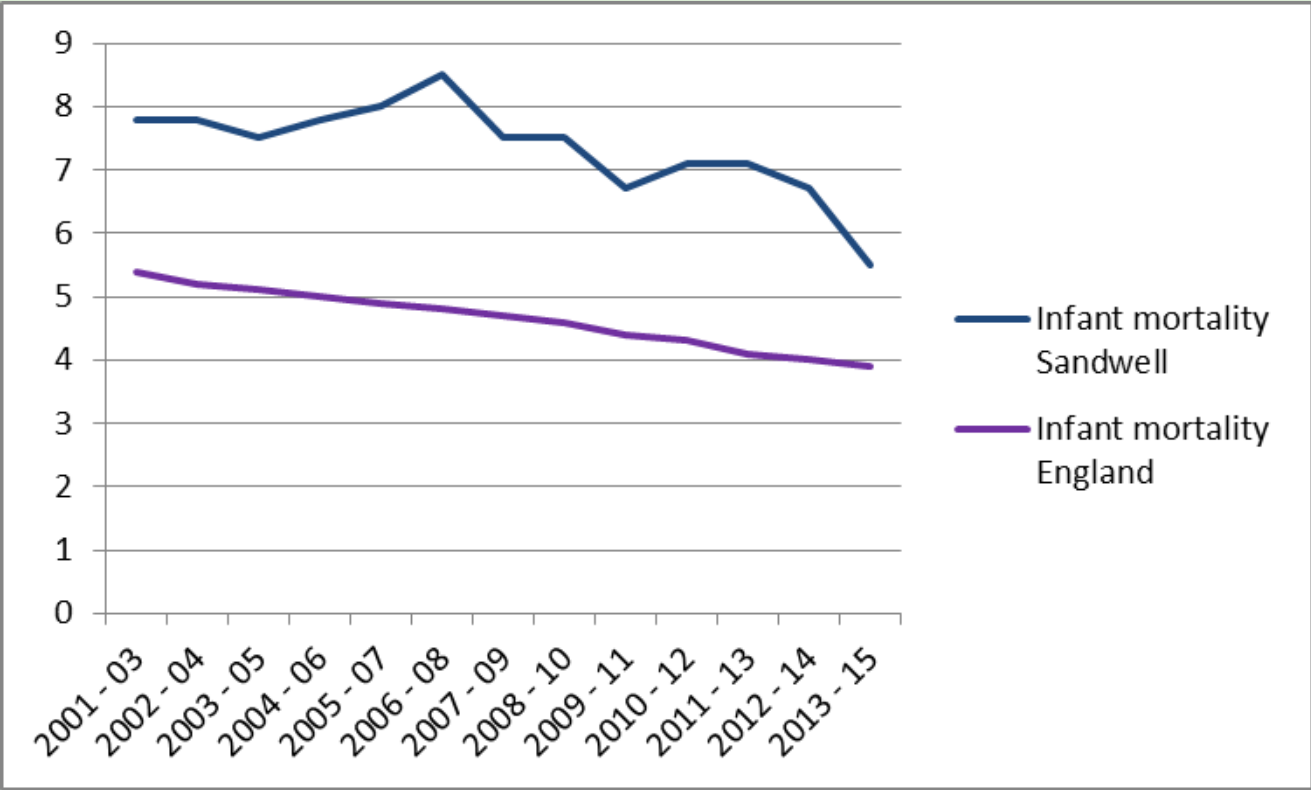
Percentage of residents in each income quintile, England and Sandwell:



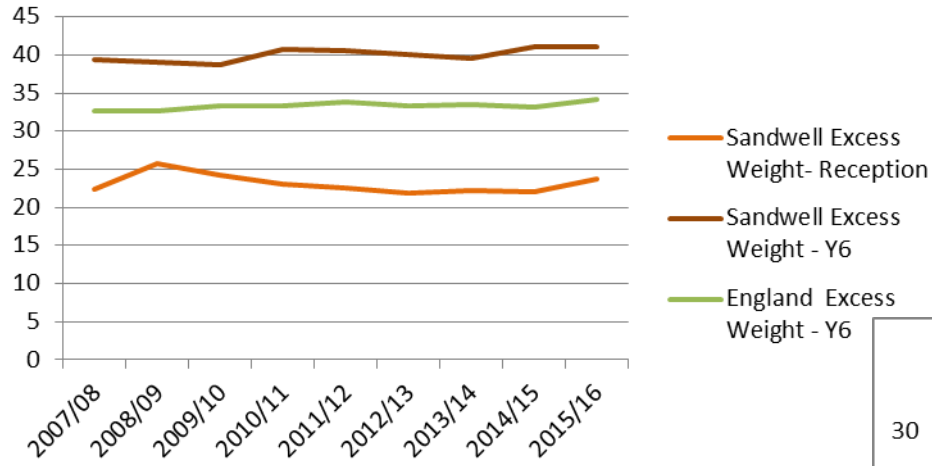
# Causes of preventable mortality, per 100,000 persons



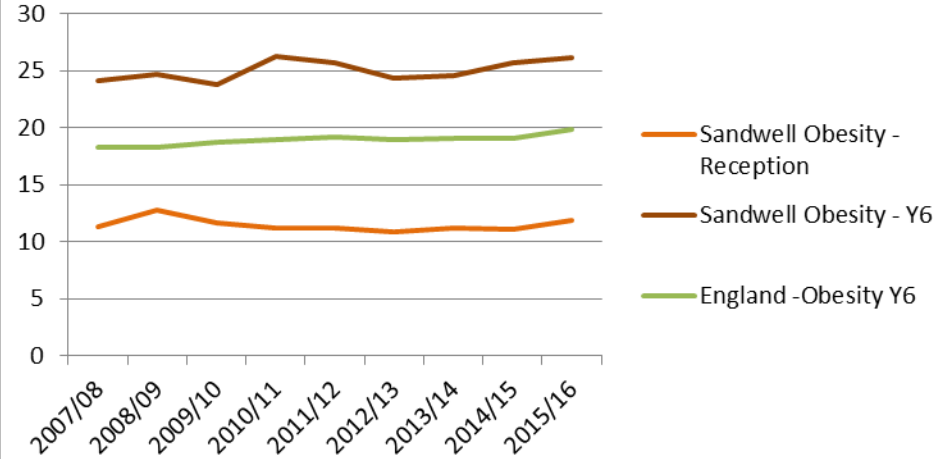
# Mortality of babies under 1 year, per 1000 live births



## Childhood Excess Weight, %

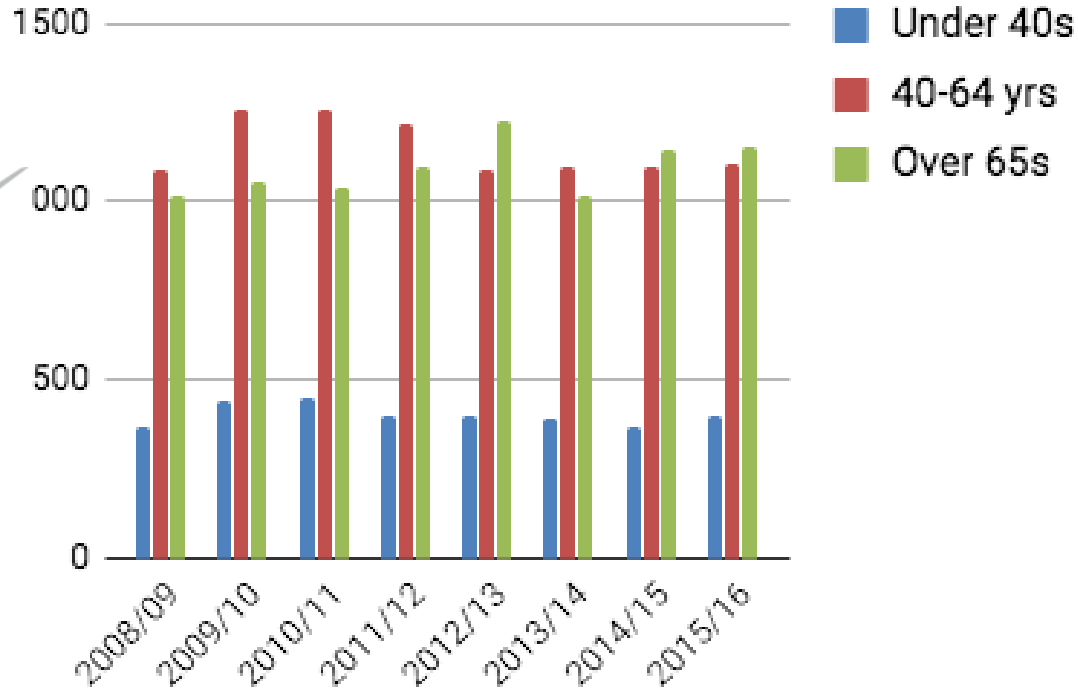


## Childhood Obesity, %



# Adult Lifestyles

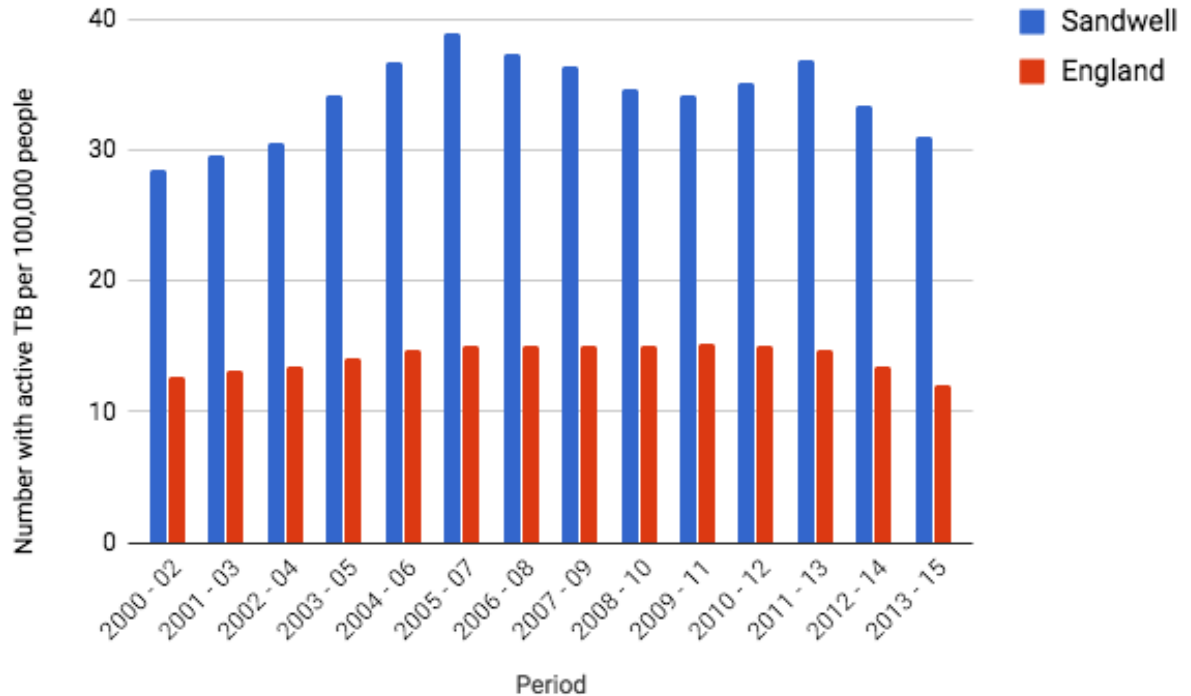
## Admission episodes for alcohol related conditions, Sandwell, per 100,000 people



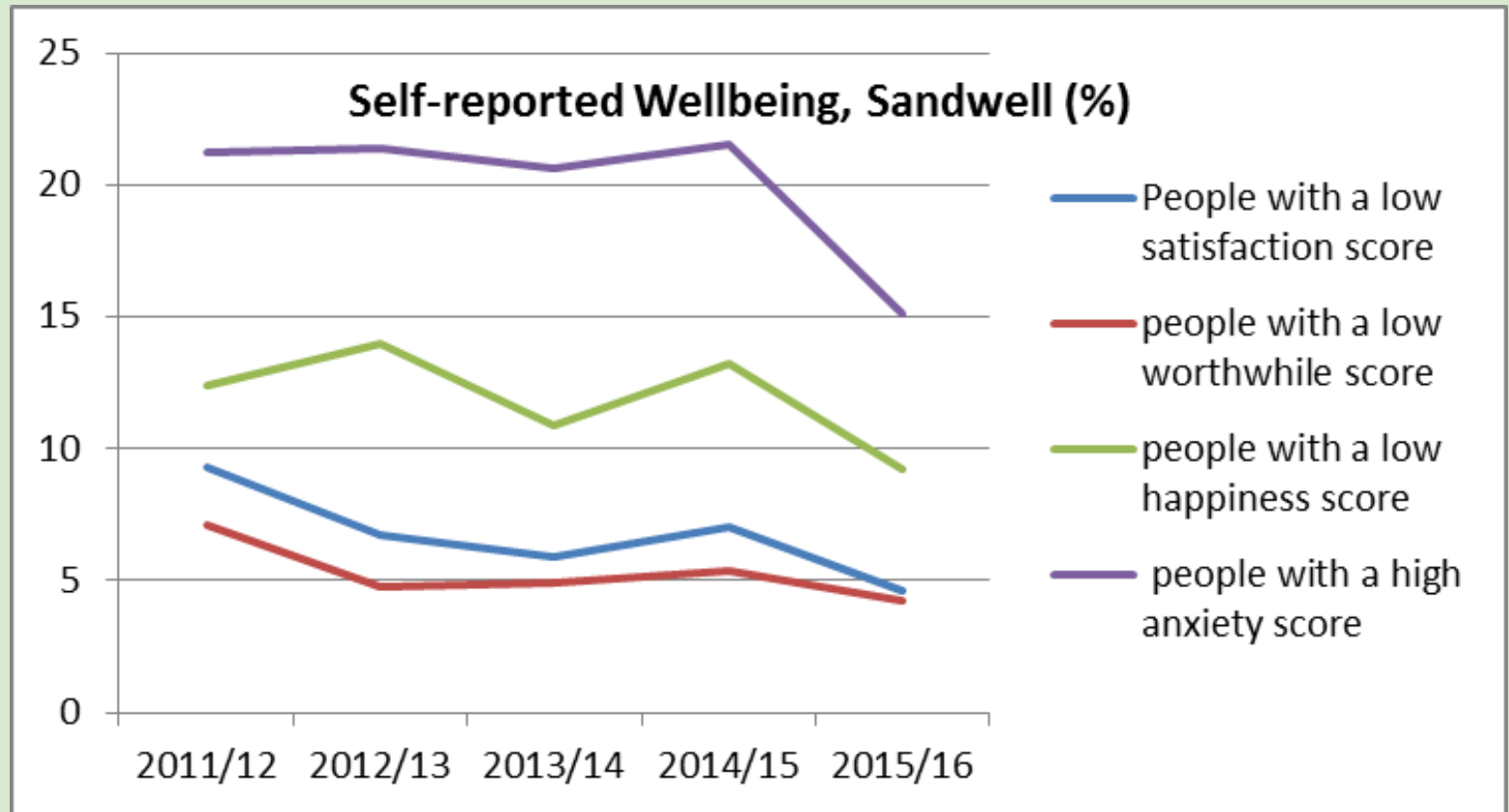
# Infectious diseases

- Sexually Transmitted Diseases
- HIV
- Tuberculosis (TB)
- Flu

## TB Incidence per 100,000 people



# Self-reported wellbeing, Sandwell, %





Q  
u  
e  
s  
t  
i  
o  
n  
s  
?



**13th** most  
deprived local authority  
out of 326

### SOCIAL DETERMINANTS



**28%** of children  
live in low income families  
England average is 19%



**Highest rates**  
of domestic abuse  
in the Midlands

### MENTAL HEALTH & WELLBEING



**6.7%** of adults  
in contact with secondary  
mental health services



**One of the worst**  
areas outside London  
for air quality



**2.9%** of working  
age population  
claim job seekers allowance  
England average is 1.3%



**22.7%** of home  
occupants rent from  
the council

**674**  
hospital stays for  
self-harm in 2014/15  
above England average

**1156**  
referrals into specialist  
Child & Adolescent Mental  
Health Services  
from April - Oct 2015

## Our Borough's stats from 2016

Source for stats is Sandwell Trends  
[www.sandwelltrends.info](http://www.sandwelltrends.info)



**102**  
per 100,000  
under 75s die from  
cardiovascular diseases  
England average is 75.7

### ILLNESS

**325.8**  
per 100,000  
smoking  
related deaths  
England average is 274.8



**69%** of adults  
are overweight  
above England average

### LIFESTYLE



**40.4%** of  
children  
in Year 6 are  
overweight or obese

**169.6**  
per 100,000  
under 75s die from cancer  
England average is 141.5



**20.9%**  
have limited activity  
due to long term  
health problems



**37.2%** of adults  
are inactive



**17.7%** of  
adults  
smoke  
England average is 16.9%



**12.8%** of people  
are accessing outdoor space  
(but 24% of the borough is green space)